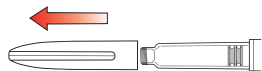


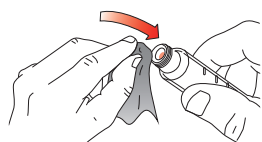
# The Mounjaro® KwikPen® –

## How to use and other important information at a glance

### 1. Prepare



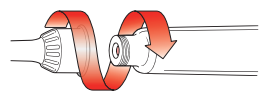
- Pull the pen cap straight off
- Check pen, dose strength and expiry date



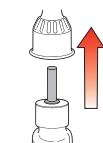
- Wipe the red inner seal with an alcohol swab



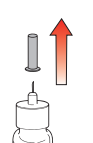
- Use a new pen needle
- Remove protective paper



- Press the capped needle **vertically onto the pen**
- Turn the needle until it is **firmly positioned**



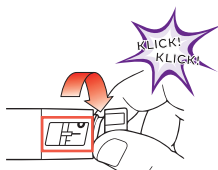
Outer needle protection cap



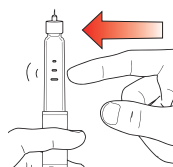
Inner needle protection cap

- **Remove outer needle cap and keep.** It will be reused
- **Remove inner needle cap and discard**

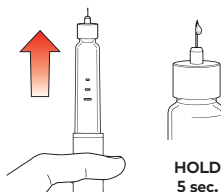
### 2. Prime



- Turn the dosing knob until you hear **2 clicks**
- Extended line must be visible. This is the **priming position**
- Correction of the priming position: Dosing knob can be turned in **both directions**



- Hold the pen with the needle pointing upwards
- Tap the cartridge holder lightly to allow air bubbles to collect at the tip
- Press the dosing knob **all the way down** to release some medicine into the air
- Hold down the dosing knob and **count to 5**
- The **0** must appear in the dose window. Do not inject into the body



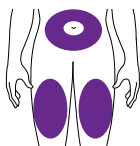
HOLD 5 sec.

- **Priming** ensures that the air is removed from the cartridge
- Pen is primed when **a small amount** of medicine comes out of the pen needle

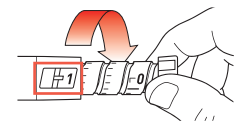
#### • Please note:

- Maximum of **8 priming cycles** per pen! Excessive priming can lead to **blockage of the pen** before the 4th (last) injection
- **No medicine visible:** Repeat step (no more than two more times)
- **Still no medicine visible:** Change the pen needle and repeat step (not more than once)
- **Still no medicine visible:** Contact Lilly office (listed in package insert)

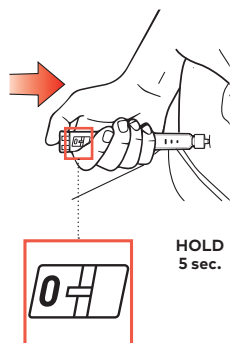
### 3. Inject



- Thigh or stomach
- At least **5 centimetres** from the belly button
- Change injection site **weekly**

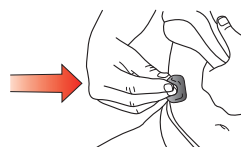


- Turn the dosing knob until it stops and the **1** is visible in the dosing window
- The **1** symbol corresponds to a **full dose**

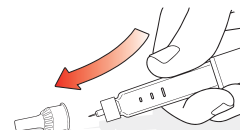


HOLD 5 sec.

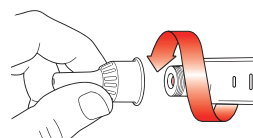
- Stick the needle into the skin
- Press the dosing knob **all the way down** {inject medicine}
- **Hold down** the dosing button and **slowly count to 5**
- As soon as the **0** is visible in the dosing window, the dose is **completely injected**
- **Pull the needle out of the skin.** A drop of medicine on the needle tip is normal. This will **not affect** your dose
- If the **0** is **visible** in the dosing window, the dose has been completely received
- If the **0** is **not visible** in the dosing window, insert the needle into the skin again and complete the injection
- Do **NOT change** the dose setting
- If you still feel that you have **not** received the **full dose** – **DO NOT** inject again
  - Contact Lilly office (see package insert)



- If blood is visible, gently press the injection site with a swab – **DO NOT rub**



- Carefully replace the **outer** protective needle cap



- Unscrew the needle with the **outer needle protection cap attached**
- **NEVER** store the pen with the needle attached, to prevent:
  - fluid running out,
  - clogging,
  - entry of air into the pen.



- Put on the protective cap
- **NEVER** store the pen without the protective cap in place

**Important note:** Needles are required for the injection of Mounjaro® with the Mounjaro® KwikPen®. The recommended needle and the prescription for it are issued by the treating physician.

### When should I inject?

- Always use Mounjaro® on the same day each week. Tip: Set a reminder in your phone or calendar for that day
- The day of weekly administration can be changed if necessary, as long as the interval between two doses is at least 3 days

### Missed a dose?

- If you miss a dose, take the missed dose as soon as possible within 4 days of when you should have taken it
- If more than 4 days have passed:
  - Skip the forgotten dose
  - Administer the next dose on the regularly scheduled day
  - Continue with the regular, once weekly administration

### Storage before opening

- Before first use, store the pen in the refrigerator between 2 °C and 8 °C.
- Unopened pens can be used until the expiry date printed on the label
- Never freeze the pen. Discard the pen if it was accidentally frozen

### Storage after opening

- Opened pen can be stored at room temperature below 30 °C
- Dispose of the pen 30 days after first use, even if there is medicine left in the pen
- Dispose of the pen after the fourth weekly dose

### Remaining amount in the Mounjaro® KwikPen® after the 4th injection

- After the 4th dose, a residual amount of the medicine remains
- The residual amount does not correspond to a full dose and should not be injected
- Pen must be disposed of with the remaining medication after the 4th (last) dose



Remaining quantity

### Disposal

- Used pen needles: puncture-proof container
- Mounjaro® KwikPen®: according to the instructions of the doctor

**Important:** Be sure to read and follow the instructions for use enclosed with your Mounjaro® KwikPen®.

## Learn more:

Staff at the practice are the first point of contact

Further information can be found in the **instructions for use** included with the Mounjaro® KwikPen®, or simply scan the QR code



Go to instructions for use

Go to [www.lilly-patient.de/de-de/mounjaro](http://www.lilly-patient.de/de-de/mounjaro), or scan the QR code



Go to the website

Scanning the QR code will take you to detailed **instructions** on how to use the Mounjaro® KwikPen®



Go to the injection training video