

FOR ADULTS WITH TYPE 2 DIABETES

Starting Mounjaro®!

Patient information
for once weekly
diabetes treatment
with Mounjaro®.



1 x wöchentlich 
mounjaro®
KwikPen®
Tirzepatid

Please read the information for use supplied with your
medicine for detailed information on safety and
how to use the Mounjaro® KwikPen®.

Lilly

What is Mounjaro®?

Mounjaro® is a once weekly medication for adults with type 2 diabetes and is available in a KwikPen®. It contains the active substance **tirzepatide**.

Mounjaro® KwikPen® is a disposable multi-dose prefilled pen.

The pen contains 4 fixed doses, one dose of which is administered weekly. Inject once a week under the skin (subcutaneously).

Each pen is only for one patient and must not be used by any other person, even if the pen needle has been changed.

Important note: Needles are required for the injection of Mounjaro® with the Mounjaro® KwikPen®.

You can get the needle recommendation and the prescription from your doctor.

How does Mounjaro® work?

Mounjaro® mimics both intestinal hormones (GIP and GLP-1) in the body, thereby regulating blood glucose levels.



Improved insulin secretion when blood glucose levels are high.



Reduces food intake.



The body becomes more efficient at removing excess sugar from the blood.



Food leaves the stomach more slowly. This decreases over time.



Impacts sugar metabolism in the liver.



The body has a better response to the insulin it produces.



Starting your Mounjaro® treatment

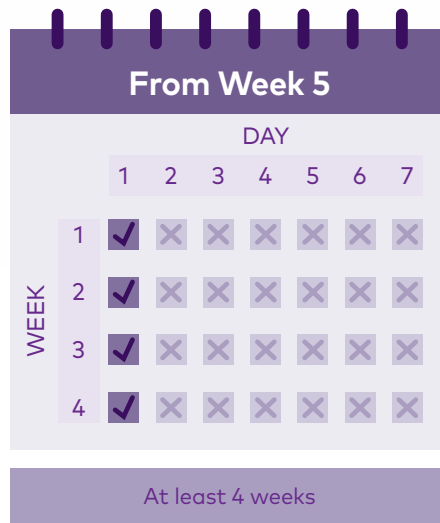
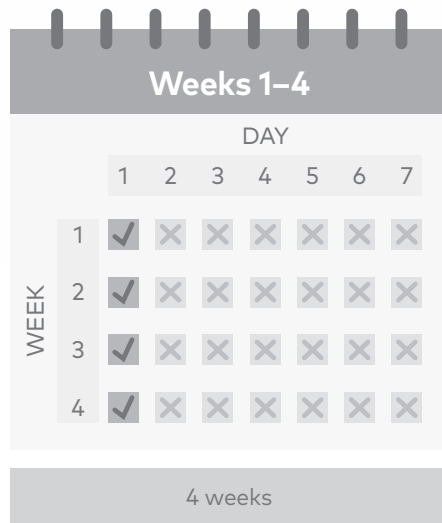
There are two simple steps when you start treatment:

STEP 1

2.5 mg once a week

STEP 2

5 mg once a week



What if you miss a dose?

If you miss a dose, take the missed dose as soon as possible **within 4 days** of when you should have taken it.

If more than 4 days have passed, skip the forgotten dose and administer the next dose on the normal scheduled day. In either case you can then continue with regular once weekly administration.



How do I store the Mounjaro® KwikPen®?

Storing your Mounjaro® KwikPen® before opening

- Before first use, store the pen in the refrigerator between 2°C and 8°C.
- Unopened pens can be used until the expiry date printed on the label, provided the pen has been stored in the refrigerator.
- Do not freeze your pen. Dispose of the pen if it has been frozen.

Storing your Mounjaro® KwikPen® after opening

- You can store your opened pen at room temperature below 30 °C.
- Store your pen and its needles out of the sight and reach of children.
- Dispose of the pen 30 days after first use, even if there is medicine left in the pen.
- Dispose of the pen after the fourth weekly dose. Attempting to inject leftover medicine may result in an incomplete dose even though the pen still contains medicine.

Disposal of the Mounjaro® KwikPen® and the pen needle

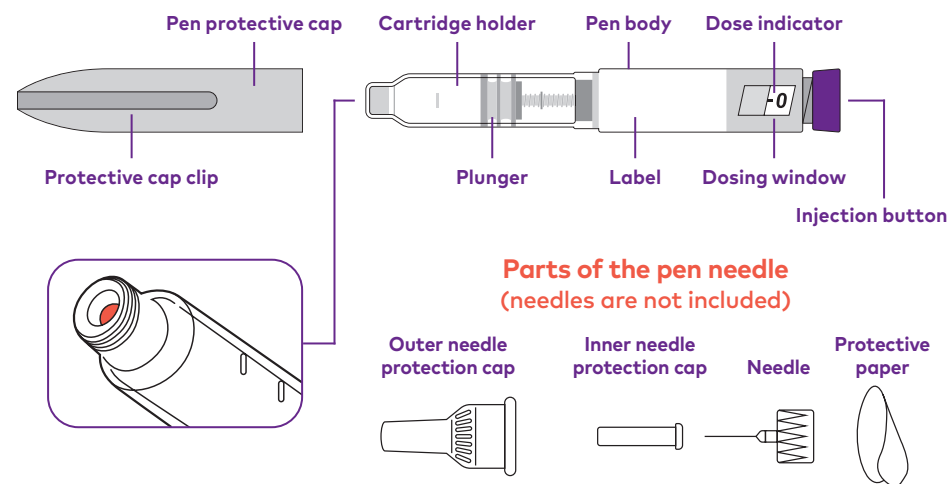
- Place your used pen needles in a puncture-proof container or a hard plastic container with a safety lid.
- Do not dispose of loose pen needles in the household waste.
- Dispose of the used pen according to the instructions provided by your doctor.
- Ask your doctor how to properly dispose of the puncture-resistant container.
- You must not reuse puncture-proof containers once they have been filled.

Do not use Mounjaro® KwikPen® if:

- The medicine name or dosage strength does not match your prescription.
- The pen has expired (use by date) or looks damaged.
- The medicine was frozen, contains particles, or is cloudy or discoloured. Mounjaro® should be colourless to slightly yellow.

In addition to the Mounjaro® KwikPen® you will need the following items:

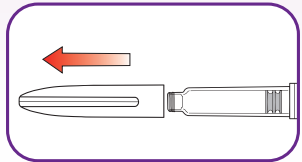
- KwikPen® compatible needle (if you do not know which pen needle to use, talk to your doctor)
- Alcohol swab, gauze bandage or cotton ball
- Puncture-proof container for sharp objects or household container



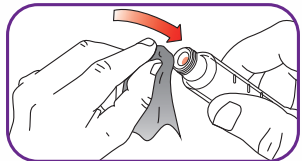
How is the Mounjaro® KwikPen® used?

! All steps must be performed for each injection!

Prepare

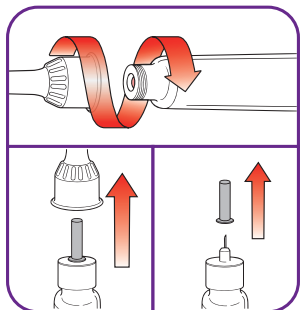
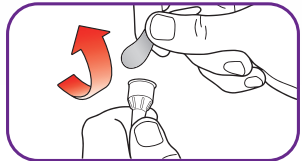


Pull the pen cap straight off and inspect the pen and label.



Take a new pen needle

- Wipe the red inner seal with a swab.
- Always use a new pen needle for each injection to avoid infections and clogged needles.
- Remove the protective paper from the outer protective needle cap.

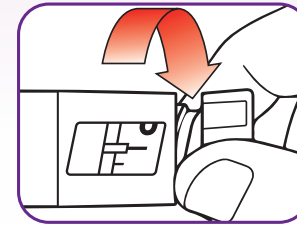


- Press the capped needle vertically onto the pen and turn the needle until it is secure.
- Remove the outer protective needle cap and keep it. It will be reused.
- Remove the inner needle cap and dispose of it.

Outer needle protection cap

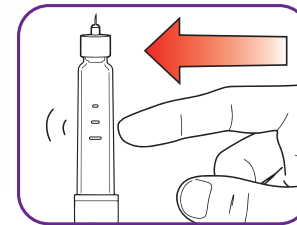
Inner needle cap

Priming

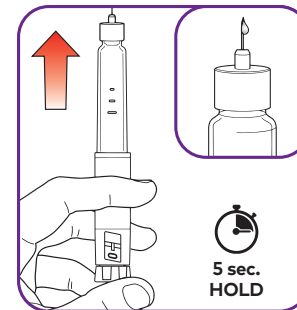


Prime the Mounjaro® KwikPen®

- Slowly turn the injection button until you hear **2 clicks** and the extended line appears in the dosing window. This is the priming position. It can be corrected by turning the injection button in either direction until the priming position matches the dose indicator.



- Hold the pen with the needle pointing upwards.
- Tap the cartridge holder lightly to allow air bubbles to collect at the tip.

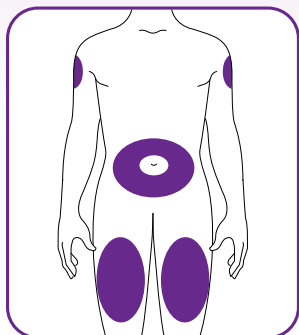


- Release some medicine into the air **by pressing the injection button all the way down. Then slowly count to 5 while holding the injection button down.** The **0** symbol must appear in the dose window. **Do not** inject into the body.
- **Priming** removes air from the cartridge and ensures that your pen will work properly. Your pen has been primed if a small amount of medicine comes out of the pen needle tip.
- If you do not see any medicine, repeat this step no more than 2 more times.
- If you still do not see any medicine, change the pen needle and repeat the steps, but not more than 1 more time.

How is the Mounjaro® KwikPen® used?

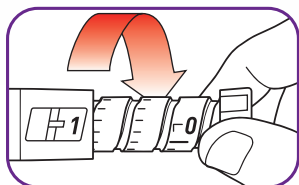
! All steps must be performed for each injection!

Inject



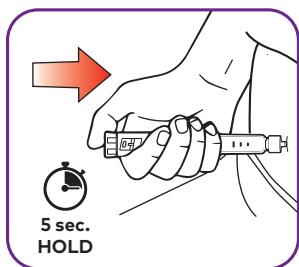
Choose your injection site

- You or someone else may inject the medicine, preferably into your thigh or your stomach (abdomen), at least 5 centimetres from your belly button. Alternatively, the other person may give you the injection in the back of your upper arm.
- Change your injection site every week. You can use the same area of the body, but make sure you choose a different injection site in that area.



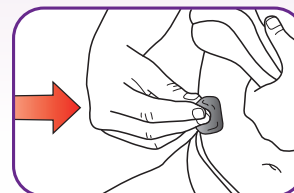
Turn the injection button

- Turn the injection button until it stops and the **1** symbol appears in the dose window. The **1** symbol corresponds to a full dose.

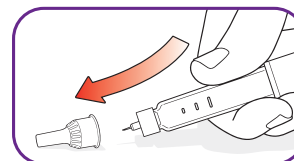


Inject Mounjaro®

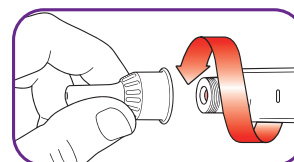
- Insert the needle into your skin.
- Inject the medicine by pushing the injection button all the way in. Then slowly count to 5 while holding the injection button down. The **0** symbol must appear in the dosing window before you remove the needle.
- Pull the needle out of your skin. A drop of medicine on the needle tip is normal. This will not affect your dose.



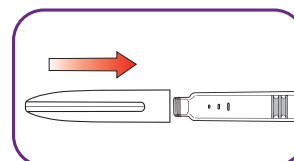
- If there is bleeding after you remove the needle from the skin, use a swab or piece of gauze to gently press on the injection site. Do not rub the area.
- Make sure the **0** symbol is in the dose window. When you see the **0** symbol in the window, you have received the full dose. If you do not see the **0** symbol in the dosing window, reinsert the needle into your skin and finish the injection. Do not change the dose setting. If you still think you have not received the full dose, do not start this injection again. Contact your Lilly office listed in the package insert.



- Carefully replace the outer protective needle cap.



- Unscrew the needle with the outer needle cap in place and dispose of the needle in a puncture-proof container. To prevent leakage, needle clogging and air entering the pen, do not store the pen with the needle attached.



- Carefully replace the protective pen cap. Do not store the pen without the pen protective cap in place (see page 7).

Tips and tricks in the event of possible side effects

Like all medicines, Mounjaro® can cause side effects. The most common side effects are **nausea** and **diarrhoea**. They usually occur when the dose is being adjusted and are usually mild or moderate. They tend to occur at the start of treatment and disappear over time in most patients.

Tips for improved tolerance:

If you feel sick after an injection, talk to the team at your medical practice. In the meantime, these tips can help you:



Eat smaller portions.



Avoid high-fat foods.



Drink water and make sure that your body gets enough fluids.

Other possible side effects:

There is little or no risk of hypoglycaemia (low blood glucose levels) with Mounjaro® administered as monotherapy. However, hypoglycaemia may occur if Mounjaro® is co-administered with medicines containing a sulphonylurea and/or insulin. If you are using a sulphonylurea or insulin, the dose may need to be reduced while you are taking Mounjaro®.

Talk to the team at your medical practice about this.

Additional information

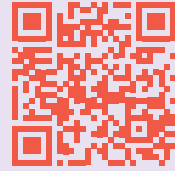
Please talk to the team at your medical practice before using Mounjaro® if:

- you have serious digestion problems or food stays in your stomach longer than usual (including severe gastroparesis).
- you have ever had pancreatitis (inflammation of the pancreas which can cause severe, persistent abdominal and back pain).
- you have problems with your eyes (e.g. diabetic retinopathy or macular oedema).

Here you can find out more:

- Talk to the team at your medical practice.
- For more information, read the information for use enclosed with your KwikPen®.
- Go to www.lilly-patient.de/de-de/mounjaro or scan the "Go to the website" QR code for more information about Mounjaro®.
- Scan the "Go to the injection training video" QR code to watch the injection training video.

Go to the website



Go to the injection training video



1. Mounjaro® Package Leaflet (current version).

Lilly

1 x wöchentlich
mounjaro®
KwikPen®
Tirzepatid