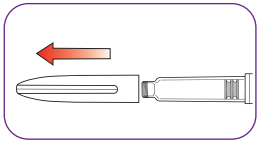


The Mounjaro® KwikPen® – How to use and other important information at a glance

For each injection, all steps must be carried out!

1. Prepare

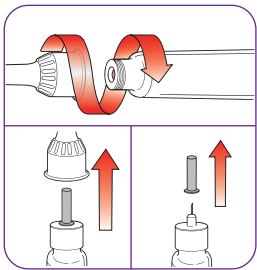
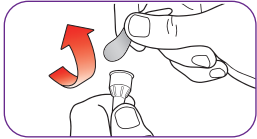


Pull the pen cap straight off and inspect the pen and label.



Take a new pen needle

- Wipe the red inner seal with a swab.
- Always use a new pen needle for each injection to avoid infections and clogged needles.
- Remove the protective paper from the outer protective needle cap.

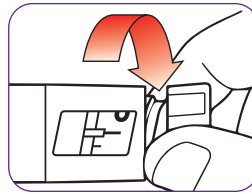


- Press the capped needle vertically onto the pen and turn the needle until it is secure.
- Remove the outer protective needle cap and keep it. It will be reused.
- Remove the inner needle cap and dispose of it.

Outer needle protection cap

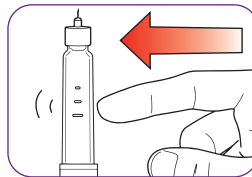
Inner needle protection cap

2. Priming

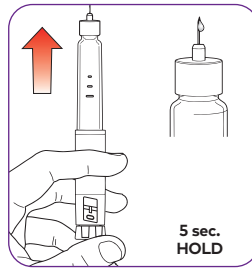


Prime the Mounjaro® KwikPen®

- Slowly turn the injection button until you hear **2 clicks** and the extended line appears in the dosing window. This is the priming position. It can be corrected by turning the injection button in either direction until the priming position matches the dose indicator.

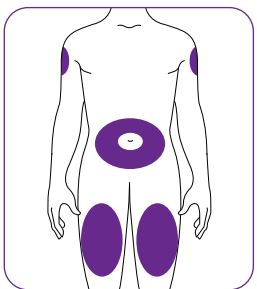


- Hold the pen with the needle pointing upwards.
- Tap the cartridge holder lightly to allow air bubbles to collect at the tip.



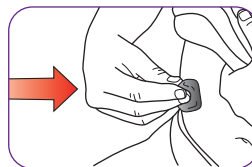
- Release some medicine into the air **by pressing the injection button all the way down. Then slowly count to 5 while holding the injection button down.** The **0** symbol must be displayed in the dosing window. **Do not** inject into the body.
- Priming** removes air from the cartridge and ensures that your pen works properly. Your pen has been primed if a small amount of medicine comes out of the pen needle tip.
- If you do not see any medicine, repeat this step no more than 2 more times.
- If you still do not see any medicine, change the pen needle and repeat the steps, but not more than 1 more time.

3. Injecting

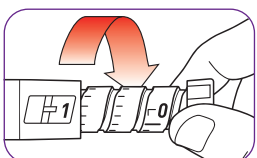


Choose your injection site

- You or another person may inject the medicine, preferably into your thigh or your stomach (abdomen), at least 5 centimetres from your belly button. Alternatively, the other person may give you the injection in the back of your upper arm.
- Change your injection site every week. You can use the same area of the body, but make sure you choose a different injection site in that area.

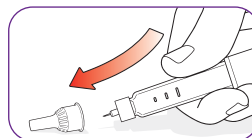


- If there is bleeding after you remove the needle from the skin, use a swab or piece of gauze to gently press on the injection site. Do not rub the area.
- Make sure the **0** symbol is in the dose window. When you see the **0** symbol in the window, you have received the full dose. If you do not see the **0** symbol in the dosing window, reinsert the needle into your skin and finish the injection. Do not change the dose setting. If you still think you have not received the full dose, do not start this injection again. Contact your Lilly office listed in the package insert.

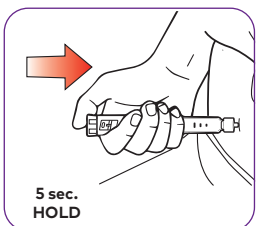


Turn the injection button

- Turn the injection button until it stops and the 1 symbol appears in the dose window.** The **1** symbol corresponds to a full dose.

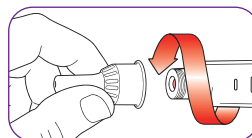


- Carefully replace the outer protective needle cap.

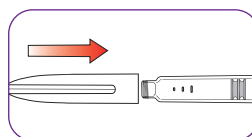


Inject Mounjaro®

- Insert the needle into your skin.
- Inject the medicine by pressing the injection button all the way down. Then slowly count to 5 while holding the injection button down. The **0** symbol must appear in the dosing window before you remove the needle.
- Pull the needle out of your skin. A drop of medicine on the needle tip is normal. This will not affect your dose.



- Unscrew the needle with the outer needle cap in place and dispose of the needle in a puncture-proof container. To prevent leakage, needle clogging and air entering the pen, do not store the pen with the needle attached.



- Carefully replace the protective pen cap. Do not store the pen without the pen protective cap in place.

Important note: Needles are required for the injection of Mounjaro® with the Mounjaro® KwikPen®. You can get the needle recommendation and the prescription from your doctor.

When should I inject?

- Always take Mounjaro® on the same day each week. It can help you to set a reminder in your phone or calendar for that day.
- The weekly day of injection can be changed if necessary, as long as the interval between two doses is at least 3 days.

Storage before opening

- Before first use, store the pen in the refrigerator between 2°C and 8°C.
- Unopened pens can be used until the expiry date printed on the label.
- Do not freeze your pen. Dispose of the pen if it has been frozen.

Important

- Read and be sure to follow the information for use enclosed with your Mounjaro® KwikPen®.

Missed a dose?

- If you miss a dose, take the missed dose as soon as possible within 4 days of when you should have taken it.
- If more than 4 days have passed, skip the forgotten dose and administer the next dose on the normal scheduled day. In any case you can then continue with regular once weekly administration.

Storage after opening

- You can store your opened pen at room temperature below 30 °C.
- Dispose of the pen 30 days after first use, even if there is still medicine in the pen.
- Dispose of the pen after the fourth weekly dose.

Disposal

- Dispose of used pen needles in a puncture-proof container and the Mounjaro® KwikPen® according to the instructions provided by your doctor.

Here you can find out more:

- **Talk to the team at your medical practice.**
- For more information, read the information for use enclosed with your Mounjaro® KwikPen®.
- Go to www.lilly-patient.de/de-de/mounjaro or scan the "Go to the website" QR code for more information about Mounjaro®.
- Scan the "Go to the injection training video" QR code to watch the injection training video.

Go to the
website



Go to the injection
training video



This leaflet is intended for individuals for whom Mounjaro® has been prescribed.

1 x wöchentlich
mounjaro[®]
KwikPen[®]
Tirzepatid